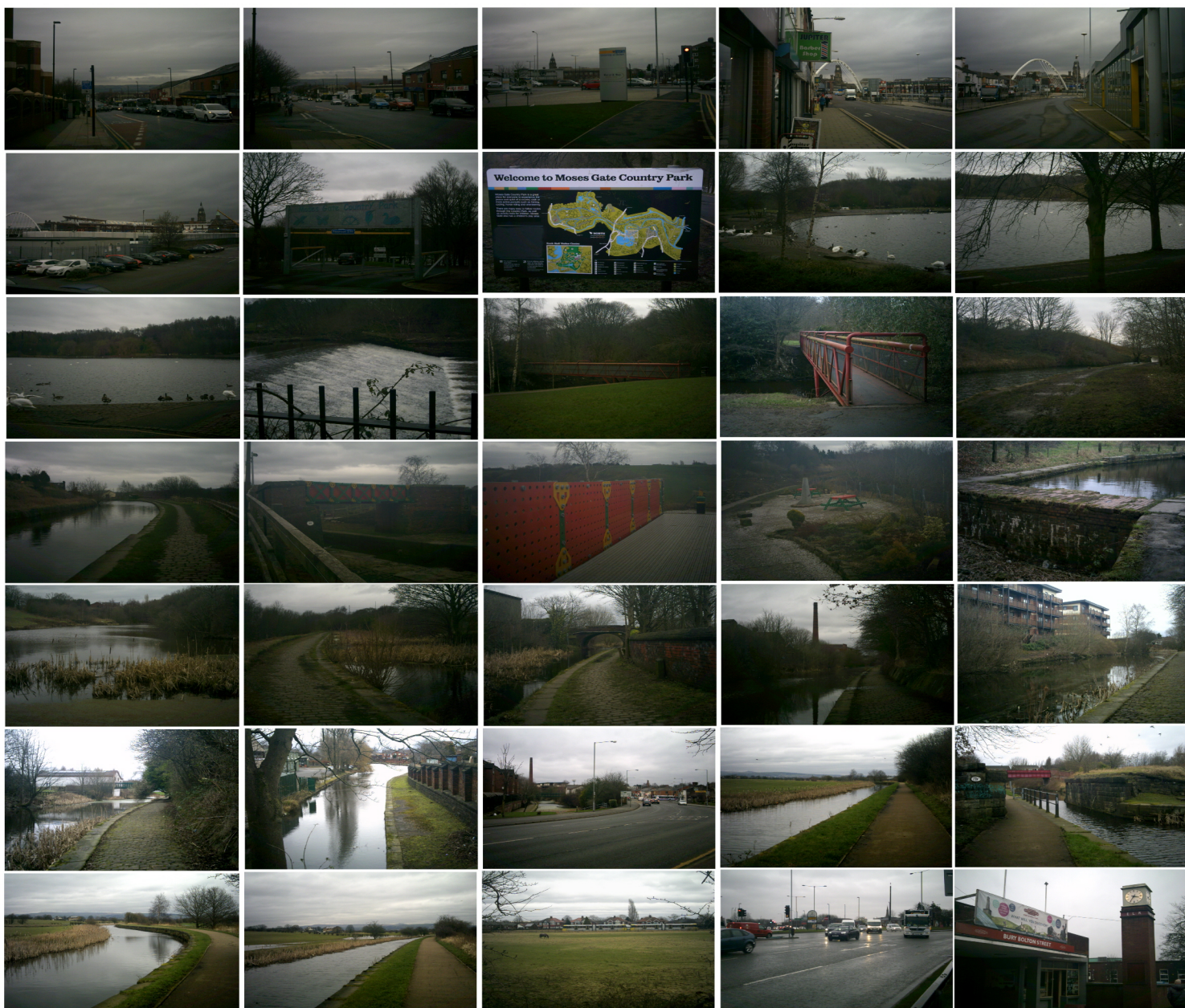
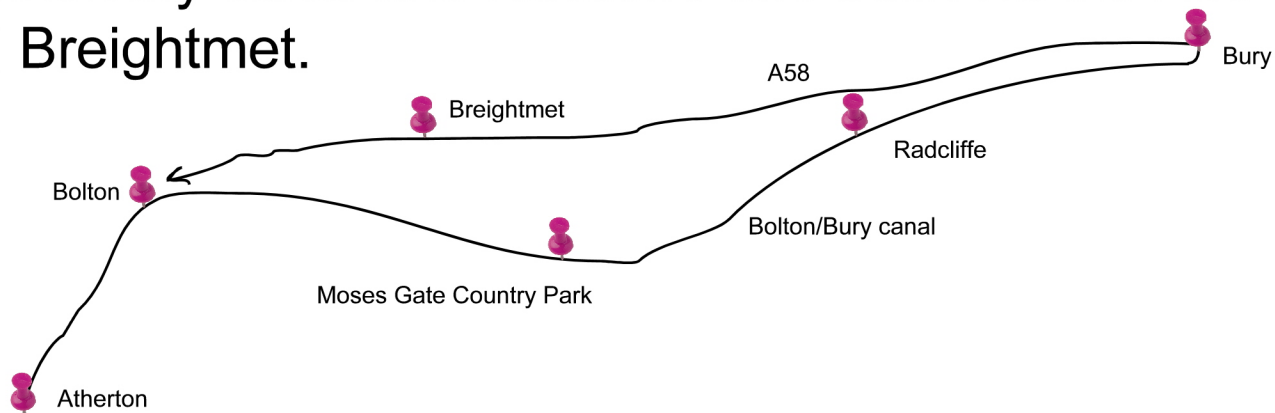


# Atherton to Bury via Moses Gate Country Park, the Bolton/Bury canal and Radcliffe and back via the A58 and Brightmet.



It wasn't easy to find the canal in Moses Gate country park because it is on top of a hill, but once I did manage to find it I then followed the canal over the meccano bridge, through Radcliffe and then onto Bury. It started to rain when I reached Bury and carried on all the way back to Atherton. I wasn't going to walk back along the canal because it went dark on my way back from Bury. The walk took me just under 9 hours and my pedometer recorded 31.46 miles and 58579 steps.

By Philip Catherall.